

Алматы (7273)495-231  
Ангарск (3955)60-70-56  
Архангельск (8182)63-90-72  
Астрахань (8512)99-46-04  
Барнаул (3852)73-04-60  
Белгород (4722)40-23-64  
Благовещенск (4162)22-76-07  
Брянск (4832)59-03-52  
Владивосток (423)249-28-31  
Владикавказ (8672)28-90-48  
Владимир (4922)49-43-18  
Волгоград (844)278-03-48  
Вологда (8172)26-41-59  
Воронеж (473)204-51-73  
Екатеринбург (343)384-55-89

Иваново (4932)77-34-06  
Ижевск (3412)26-03-58  
Иркутск (395)279-98-46  
Казань (843)206-01-48  
Калининград (4012)72-03-81  
Калуга (4842)92-23-67  
Кемерово (3842)65-04-62  
Киров (8332)68-02-04  
Коломна (4966)23-41-49  
Кострома (4942)77-07-48  
Краснодар (861)203-40-90  
Красноярск (391)204-63-61  
Курск (4712)77-13-04  
Курган (3522)50-90-47  
Липецк (4742)52-20-81

Россия +7(495)268-04-70

Магнитогорск (3519)55-03-13  
Москва (495)268-04-70  
Мурманск (8152)59-64-93  
Набережные Челны (8552)20-53-41  
Нижний Новгород (831)429-08-12  
Новокузнецк (3843)20-46-81  
Ноябрьск (3496)41-32-12  
Новосибирск (383)227-86-73  
Омск (3812)21-46-40  
Орел (4862)44-53-42  
Оренбург (3532)37-68-04  
Пенза (8412)22-31-16  
Петрозаводск (8142)55-98-37  
Псков (8112)59-10-37  
Пермь (342)205-81-47

Казахстан +7(7172)727-132

Ростов-на-Дону (863)308-18-15  
Рязань (4912)46-61-64  
Самара (846)206-03-16  
Санкт-Петербург (812)309-46-40  
Саратов (845)249-38-78  
Севастополь (8692)22-31-93  
Саранск (8342)22-96-24  
Симферополь (3652)67-13-56  
Смоленск (4812)29-41-54  
Сочи (862)225-72-31  
Ставрополь (8652)20-65-13  
Сургут (3462)77-98-35  
Сыктывкар (8212)25-95-17  
Тамбов (4752)50-40-97  
Тверь (4822)63-31-35

Киргизия +996(312)96-26-47

Тольятти (8482)63-91-07  
Томск (3822)98-41-53  
Тула (4872)33-79-87  
Тюмень (3452)66-21-18  
Ульяновск (8422)24-23-59  
Улан-Удэ (3012)59-97-51  
Уфа (347)229-48-12  
Хабаровск (4212)92-98-04  
Чебоксары (8352)28-53-07  
Челябинск (351)202-03-61  
Череповец (8202)49-02-64  
Чита (3022)38-34-83  
Якутск (4112)23-90-97  
Ярославль (4852)69-52-93

<https://hs.nt-rt.ru> || [hbs@nt-rt.ru](mailto:hbs@nt-rt.ru)

HAAG-STREIT SLIT LAMP BQ 900

## Sophisticated microscopy – outstanding performance

Thanks to its excellent optics, versatility and ease of operation, the BQ 900 has become the standard for those requiring advanced slit lamp microscopy.



SOPHISTICATED MICROSCOPY

## Optical excellence

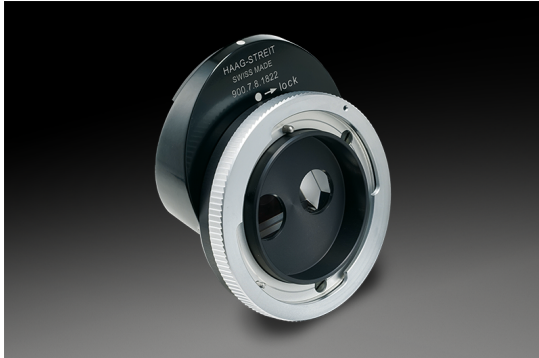
The BQ 900 is equipped by default with a Galilean Microscope providing a magnification range from  $6.3\times$  up to  $40\times$  selectable in 5 fixed steps. The high light transmission and the optical excellence ensure a superb clinical view. The large diameter of the exit pupils allows fatigue-free examination even on long working days.

SOPHISTICATED MICROSCOPY

## Stereo variator

By reducing the angle of stereoscopic observation, the stereo variator facilitates the examination of the fundus, peripheral parts of the retina and the vitreous, even under unfavourable conditions such as high myopia and small pupils. The reduction of the angle enlarges the stereoscopic field of view, maintaining depth information in the stereoscopic observation.





SOPHISTICATED MICROSCOPY

## Inclined eyepiece adaptor

With the inclined eyepiece adaptor, the view into the microscope is inclined at 20 degrees to the horizontal. Consequently, the examiner is able to maintain his head in a fatigue-free position.

SOPHISTICATED MICROSCOPY

## Zoom objective

With the zoom objective, the magnification can be continuously changed from 6 up to 40 x. Reference points are set at magnifications 10 x, 16 x and 25 x to allow easy orientation. The zoom objective offers excellent diagnostic capabilities – especially when used in conjunction with video function. Any existing BQ 900 can be modified from a standard model to a BQ 900 – Zoom.



SOPHISTICATED MICROSCOPY

## Yellow filter

This yellow barrier filter provides additional contrast to fluorescein images. It can be mounted permanently on the slit lamp and easily inserted or removed as required.

SOPHISTICATED MICROSCOPY

## Beam splitter

The beam splitter diverts a portion of the light to secondary attachments such as second observer tubes and video- or digital cameras. Beam splitters are available in different versions. The beam splitter for cameras diverts 70% of the light to the secondary attachment, the one for co-observation under equal conditions diverts only 50% of the light. Video or digital cameras can be connected to the beam splitter with a range of C-mount adaptors, which offer different focal lengths for variable sensor sizes.





SOPHISTICATED MICROSCOPY

## Second observer tubes

Haag-Streit's second observer tubes are designed to permit professional colleagues, students or technicians to participate in the examination. There are two versions of second observer tubes available: a short version for co-observing in sitting position and a long version for co-observing in upright position.

SLIT LAMP IMAGING

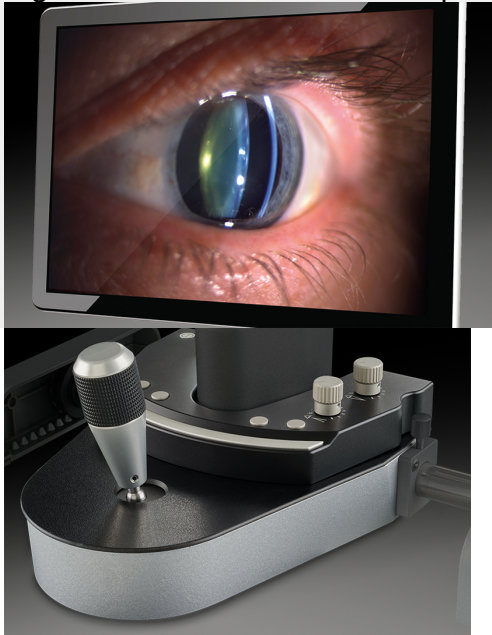
# Intuitive imaging – best results

Since electronic documentation and patient education are on the rise, every eye care professional has the need for imaging. As the leader in slit lamp imaging, Haag-Streit is meeting this need with the introduction of two new imaging systems – the IM 600, a more basic, and the new IM 900, a very sophisticated version. With both solutions Haag-Streit sets new standards in digital slit lamp imaging.

## SLIT LAMP IMAGING

### IM 900 - outstanding image quality

Equipped with an ultra-sensitive camera, the IM 900 produces images of exceptional quality even under difficult light conditions. Thanks to this sensitivity patient comfort is improved significantly as it is easily possible to record findings without excessively dazzling the patient. Like any professional camera, the IM 900 is equipped with depth of field control, which allows to adjust the camera ideally, regardless of the location of the pathology.



## SLIT LAMP IMAGING

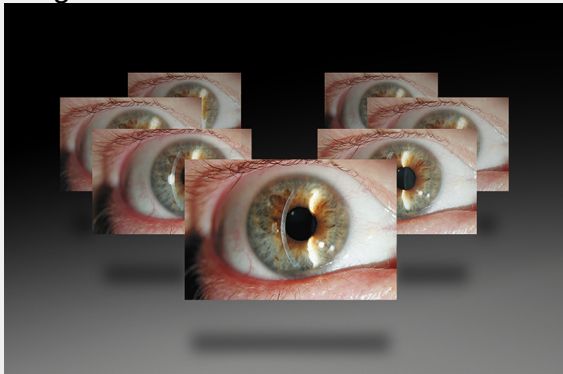
# Ideal workflow – no distraction

The control panel allows to operate both the camera and the slit lamp illumination. Located in front of the joystick of the slit lamp, it can be used blindly while focusing on the patient. The compact and modern design conforms to the design of the slit lamp. Thus the Imaging Module comes as a component of the whole system, thereby supporting an ideal examination workflow.

## SLIT LAMP IMAGING

# Simple image capturing

A fast and accurate automatic exposure control ensures correct illumination of the image while the operator is concentrating on his examination. Thanks to the History Trigger function, there is no need to worry about a patient blinking or moving when taking an image. The History Trigger does not just capture a single image, but records the last few seconds in real time and allows to select the perfect image.



## SLIT LAMP IMAGING

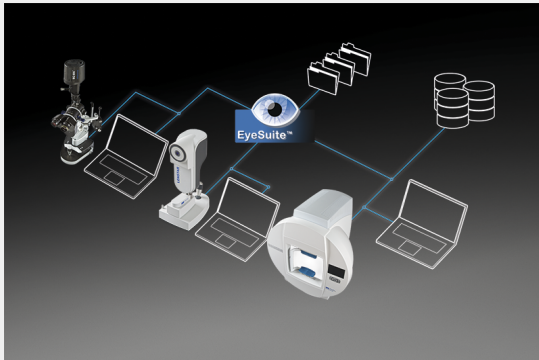
# Intuitive software

EyeSuite Imaging is a straightforward imaging software supporting the Haag-Streit imaging solutions. Easy image capture, efficient image editing and a well-structured patient management system make the software a perfect team player for daily practice.

SLIT LAMP IMAGING

## Flexible interfaces for easy network integration

The EyeSuite software is designed for optimal patient flow in busy practices. Supporting the Haag-Streit imaging solutions, EyeSuite makes the slit lamp fully networkable. Thus, no proprietary third-party software is required to provide connectivity. If the slit lamp is connected to an EyeSuite server, all the images taken can be accessed remotely from any number of viewing stations connected to the same database.



SLIT LAMP IMAGING

# More convenient than ever before

The Imaging Modules IM 900 and IM 600 are more than just cameras. They are fully integrated compact imaging solutions providing features which make slit lamp imaging more convenient than ever before.



FUNDUS MODULE 300

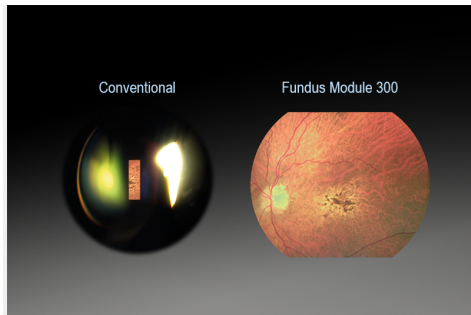
## Instant fundus imaging on the slit lamp

This innovative accessory offers all users of current Haag-Streit slit lamps access to instant documentation of the retina. The impressive simplicity of the Fundus Module 300 allows integration of non-mydratic retina imaging as part of the regular slit lamp examination. This can improve practice workflow and save both clinical and patient time.

FUNDUS MODULE 300

## Outstanding results

The image quality of the Fundus Module 300 exceeds by far the conventional possibilities on slit lamps – it even stands up to comparison with full-blown screening fundus cameras!



FUNDUS MODULE 300

## Efficient workflow

With Fundus Module 300 the basic images required for clinical documentation can be acquired directly and quickly at the slit lamp thus reducing the need for specialist technicians and equipment.

Taking the Fundus Module 300 from the cradle and putting it on the slit lamp takes only a few seconds. On the slit lamp it provides two states: a working position where it captures images of the fundus and a stand-by position where it allows normal use of the slit lamp.

FUNDUS MODULE 300

## Simple image capturing

Simply swivel the instrument into working position and align the camera with the slit lamp cross slide. The capture and illumination control are conveniently placed in front of the joystick on the slit lamp control panel. Pressing the release bar triggers the autofocussing of the camera; as soon as accurate focus is reached the image is captured and automatically uploaded into EyeSuite.



FUNDUS MODULE 300

## Intuitive software

EyeSuite Imaging is an effective and proven software application that supports a number of Haag-Streit instruments including slit lamp imaging solutions. Images are easily captured and can be edited and displayed in this well structured system that complements daily practice.

FUNDUS MODULE 300

## Flexible interfaces for easy network integration

The EyeSuite software is designed for optimal patient flow in busy practices. Supporting the Haag-Streit imaging solutions, EyeSuite makes the slit lamp fully networkable. Thus, no proprietary third-party software is required to provide connectivity. If the slit lamp is connected to an EyeSuite server, all the images taken can be accessed remotely from any number of viewing stations connected to the same database.



HAAG-STREIT AT 900 & AT 900 D

## Two instruments - one gold standard

Haag-Streit offers two models of Goldman applanation tonometers: the AT 900 a purely mechanical instrument and the AT 900 D which introduces advantages from digital technology.

TONOSAFE

## Prismes pour tonomètre à usage unique

[Translate to Französisch:] Tonosafe™ is a disposable measuring prism for all Goldman applanation tonometers as well as the Perkins tonometer. Tonosafe™ disposable prisms are a convenient, effective method of reducing the risk of cross infection between patients.



GOLDMANN PRISMS



## Excellent optical quality

The reusable Goldmann measuring prisms are distinguished by their optical and mechanical performance which allows for fast and reliable measurements in daily practice. They are largely handmade by experienced workers, and are checked for tight tolerances in weight, optical quality, durability and for consistent measurement results.



BQ 900 ACCESSORIES

## Improved efficiency - optimal examination

As supplier of complete solutions, Haag-Streit offers a wide range of accessories of great benefit to the ambitious slit lamp user.

BQ 900 ACCESSORIES

## Tables and units

Haag-Streit offers a wide range of instrument tables that fit most ophthalmic products, from slit lamps to bowl perimeters. The HSM 901 and HSM 600 series tables fit complex diagnostic systems, featuring cable guides and other handy design detail.



BQ 900 ACCESSORIES

## Eyepiece with crosshair reticule

The use of this eyepiece ensures perfect focus of the microscope image onto the camera by compensating for user accommodation.

BQ 900 ACCESSORIES

## Eyepiece for length & angle estimation

The eyepieces for length and angle estimation provide a reticle in the optics which gives a reference for linear distances and angles. The eyepiece with reticle for both length and distances comes with 10 x magnification and requires an adapting sleeve for BQ / BP 900 since it has been developed for the BM 900.



BQ 900 ACCESSORIES

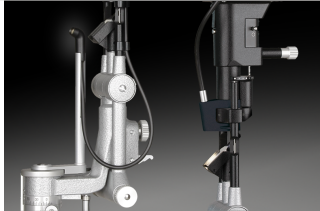
## Eyepiece for length estimation

The eyepieces for length estimation provide a reticle in the optics which gives a reference for linear distances. The eyepiece comes with 12.5 x magnification and fits directly into the BQ / BP 900.

BQ 900 ACCESSORIES

## Eyepiece with McIntyre comparison grid

This eyepiece provides a reticle in the optics which shows a grid with different density pattern. These pattern allow the observer to estimate the cell density of the endothelium. It is recommended to use it in combination with the contrast enhancing 2.2 x contact lens to provide enhanced viewing of the endothelium.



BQ 900 ACCESSORIES

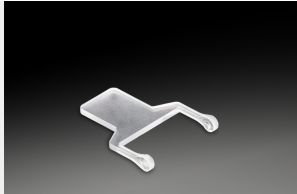
## LED-Background illumination

A bright and even background illumination is an important factor for all imaging applications on the slit lamp. All LED illumination heads for BQ 900, BP 900 and BI 900 are pre-configured so that only the fiber optic need to be connected. Haag-Streit offers two solutions: A pivoting background illumination which has the advantage that it can be set independently from the slit illumination and a fixed version which has the advantage that it does not restrict the operation area between slit lamp and patient.

BQ 900 ACCESSORIES

## Diffusor

This accessory diffuses the light to provide an improved general overview of the eye when the slit lamp is used at low magnification. Especially for imaging this accessory is indispensable.



BQ 900 ACCESSORIES

## Video adaptor for digital cameras

With the BQ 900 it is possible to add video or digital cameras to the beam splitter with two different C-mount adaptors, which offer different focal lengths for variable sensor sizes. A f56 adaptor which is recommended for 1/3" sensors and a f75 adaptor for 1/2" sensors. Both adapters include aperture control which allows to control the depth of field within the image.

BQ 900 ACCESSORIES

## Short illumination mirror

When working with small illumination angles (e.g. for fundus examination) the standard mirror obscures one of the optical pathes partially or completely. The short mirror allows unobstructed view but requires that the illumination is tilted by 10° in order to have the complete light patch on the mirror.



BQ 900 ACCESSORIES

## Accessory mounting pin

This accessory mounting base is a standard interface for attachments to the slit lamp such as laser adapters or applanation tonometer.

BQ 900 ACCESSORIES

## Tungsten bulb

While all new Haag-Streit slit lamps are sold with LED illumination there are thousands of tungsten slit lamps in the market. For these slit lamps Haag-Streit recommends the upgrade to LED. If for some reasons an upgrade is not considered users should only use the original Haag-Streit Tungsten lamp bulb to get the best performance from their Haag-Streit slit lamp.



BQ 900 ACCESSORIES

## Headrest

The headrest has been designed according to anatomical criteria and includes an adjustable chinrest. The unique fixation device permits uninterrupted observation and simultaneous guidance of the patient's eye which helps to make examination more comfortable for operator and patient. The headrest is available with and without fixation device.

**Алматы** (7273)495-231  
**Ангарск** (3955)60-70-56  
**Архангельск** (8182)63-90-72  
**Астрахань** (8512)99-46-04  
**Барнаул** (3852)73-04-60  
**Белгород** (4722)40-23-64  
**Благовещенск** (4162)22-76-07  
**Брянск** (4832)59-03-52  
**Владивосток** (423)249-28-31  
**Владикавказ** (8672)28-90-48  
**Владимир** (4922)49-43-18  
**Волгоград** (844)278-03-48  
**Вологда** (8172)26-41-59  
**Воронеж** (473)204-51-73  
**Екатеринбург** (343)384-55-89

**Иваново** (4932)77-34-06  
**Ижевск** (3412)26-03-58  
**Иркутск** (395)279-98-46  
**Казань** (843)206-01-48  
**Калининград** (4012)72-03-81  
**Калуга** (4842)92-23-67  
**Кемерово** (3842)65-04-62  
**Киров** (8332)68-02-04  
**Коломна** (4966)23-41-49  
**Кострома** (4942)77-07-48  
**Краснодар** (861)203-40-90  
**Красноярск** (391)204-63-61  
**Курск** (4712)77-13-04  
**Курган** (3522)50-90-47  
**Липецк** (4742)52-20-81

**Магнитогорск** (3519)55-03-13  
**Москва** (495)268-04-70  
**Мурманск** (8152)59-64-93  
**Набережные Челны** (8552)20-53-41  
**Нижний Новгород** (831)429-08-12  
**Новокузнецк** (3843)20-46-81  
**Ноябрьск** (3496)41-32-12  
**Новосибирск** (383)227-86-73  
**Омск** (3812)21-46-40  
**Орел** (4862)44-53-42  
**Оренбург** (3532)37-68-04  
**Пенза** (8412)22-31-16  
**Петрозаводск** (8142)55-98-37  
**Псков** (8112)59-10-37  
**Пермь** (342)205-81-47

**Ростов-на-Дону** (863)308-18-15  
**Рязань** (4912)46-61-64  
**Самара** (846)206-03-16  
**Санкт-Петербург** (812)309-46-40  
**Саратов** (845)249-38-78  
**Севастополь** (8692)22-31-93  
**Саранск** (8342)22-96-24  
**Симферополь** (3652)67-13-56  
**Смоленск** (4812)29-41-54  
**Сочи** (862)225-72-31  
**Ставрополь** (8652)20-65-13  
**Сургут** (3462)77-98-35  
**Сыктывкар** (8212)25-95-17  
**Тамбов** (4752)50-40-97  
**Тверь** (4822)63-31-35

**Тольятти** (8482)63-91-07  
**Томск** (3822)98-41-53  
**Тула** (4872)33-79-87  
**Тюмень** (3452)66-21-18  
**Ульяновск** (8422)24-23-59  
**Улан-Удэ** (3012)59-97-51  
**Уфа** (347)229-48-12  
**Хабаровск** (4212)92-98-04  
**Чебоксары** (8352)28-53-07  
**Челябинск** (351)202-03-61  
**Череповец** (8202)49-02-64  
**Чита** (3022)38-34-83  
**Якутск** (4112)23-90-97  
**Ярославль** (4852)69-52-93

Россия +7(495)268-04-70

Казахстан +7(7172)727-132

Киргизия +996(312)96-26-47

<https://hs.nt-rt.ru> || [hbs@nt-rt.ru](mailto:hbs@nt-rt.ru)