

Алматы (7273)495-231
Ангарск (3955)60-70-56
Архангельск (8182)63-90-72
Астрахань (8512)99-46-04
Барнаул (3852)73-04-60
Белгород (4722)40-23-64
Благовещенск (4162)22-76-07
Брянск (4832)59-03-52
Владивосток (423)249-28-31
Владикавказ (8672)28-90-48
Владимир (4922)49-43-18
Волгоград (844)278-03-48
Вологда (8172)26-41-59
Воронеж (473)204-51-73
Екатеринбург (343)384-55-89

Иваново (4932)77-34-06
Ижевск (3412)26-03-58
Иркутск (395)279-98-46
Казань (843)206-01-48
Калининград (4012)72-03-81
Калуга (4842)92-23-67
Кемерово (3842)65-04-62
Киров (8332)68-02-04
Коломна (4966)23-41-49
Кострома (4942)77-07-48
Краснодар (861)203-40-90
Красноярск (391)204-63-61
Курск (4712)77-13-04
Курган (3522)50-90-47
Липецк (4742)52-20-81

Россия +7(495)268-04-70

Магнитогорск (3519)55-03-13
Москва (495)268-04-70
Мурманск (8152)59-64-93
Набережные Челны (8552)20-53-41
Нижний Новгород (831)429-08-12
Новокузнецк (3843)20-46-81
Ноябрьск (3496)41-32-12
Новосибирск (383)227-86-73
Омск (3812)21-46-40
Орел (4862)44-53-42
Оренбург (3532)37-68-04
Пенза (8412)22-31-16
Петрозаводск (8142)55-98-37
Псков (8112)59-10-37
Пермь (342)205-81-47

Казахстан +7(7172)727-132

Ростов-на-Дону (863)308-18-15
Рязань (4912)46-61-64
Самара (846)206-03-16
Санкт-Петербург (812)309-46-40
Саратов (845)249-38-78
Севастополь (8692)22-31-93
Саранск (8342)22-96-24
Симферополь (3652)67-13-56
Смоленск (4812)29-41-54
Сочи (862)225-72-31
Ставрополь (8652)20-65-13
Сургут (3462)77-98-35
Сыктывкар (8212)25-95-17
Тамбов (4752)50-40-97
Тверь (4822)63-31-35

Киргизия +996(312)96-26-47

Тольятти (8482)63-91-07
Томск (3822)98-41-53
Тула (4872)33-79-87
Тюмень (3452)66-21-18
Ульяновск (8422)24-23-59
Улан-Удэ (3012)59-97-51
Уфа (347)229-48-12
Хабаровск (4212)92-98-04
Чебоксары (8352)28-53-07
Челябинск (351)202-03-61
Череповец (8202)49-02-64
Чита (3022)38-34-83
Якутск (4112)23-90-97
Ярославль (4852)69-52-93

<https://hs.nt-rt.ru> || hbs@nt-rt.ru

HAAG-STREIT CONTACT LENSES

For absolute certainty – don't go for
less than a Haag-Streit product



DIAGNOSTIC LENSES

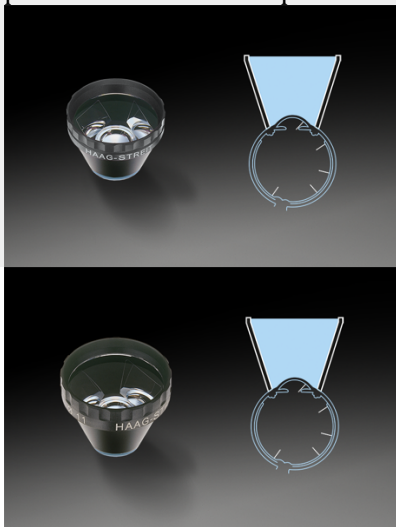
Do not miss any detail

The range of Haag-Streit contact lenses were developed largely in conjunction with Prof. Goldmann and are designed for an optimal examination of the eye with the slit lamp. They are valuable diagnostic accessories which have proven use in ophthalmic clinical practice and research.

DIAGNOSTIC LENSES

Contact lenses 903 and 903 S

The established Goldmann contact lenses series for examination of the entire ocular fundus and the iridocorneal angle. The 903 and 903 S lenses are the classic Goldmann lenses - the S in 903 S indicates that there is a scleral flange which serves as a eyelid block. They can be used with Sterycup - best to prevent the transfer of prions between patients.



DIAGNOSTIC LENSES

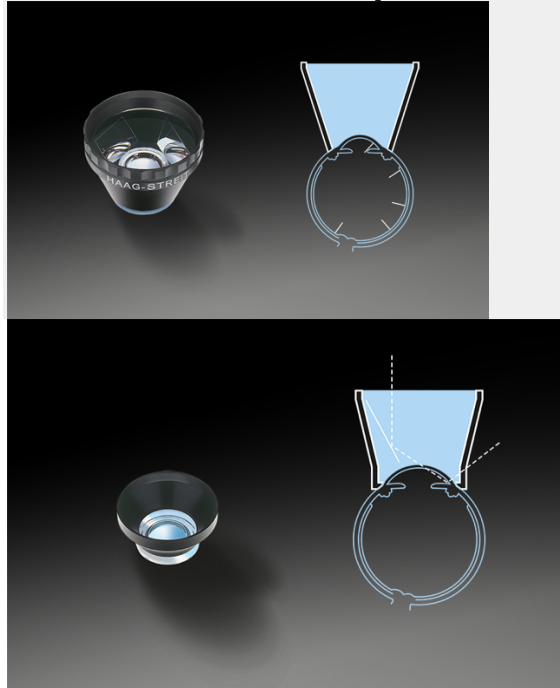
Contact lenses 907 and 907 S

The 907 and 907 S are for examining children up to 4 years of age (11 mm internal diameter of the cornea part). The S in 907 S indicates that there is a scleral flange which serves as an eyelid block.

DIAGNOSTIC LENSES

Contact lens 630

The 630 is for use with slit lamps which have a smaller distance between the eye and the reduction prism than the Haag-Streit 900 series.



DIAGNOSTIC LENSES

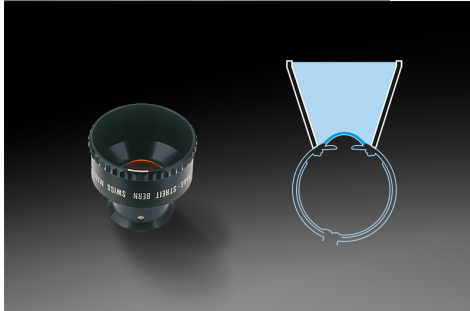
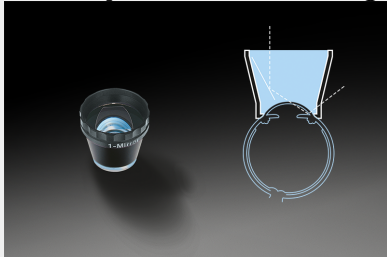
Fundus contact lens 901

For the binocular slit observation of the pupil, the macula, its surroundings out to 30° as well as the central vitreous body sections. Easy to use, lightweight glass provides a direct image.

DIAGNOSTIC LENSES

One mirror glaucoma contact lens 902 and 902 S

For the examination of the anatomical conditions in the area of the front of the iris. The expanse and form of the iridocorneal angle can only be ascertained by employing a narrow slit beam. Haag-Streit slit lamps with their swivelling and declinable illumination are primarily capable of providing an assessment of the expanse of the entire angle of the iris, which is of special importance in glaucoma diagnostics.



DIAGNOSTIC LENSES

Endothelium contact lens 1210

The 1210 is a cornea diagnostic lens which has been designed by Prof. Eisner. It allows the examination of the corneal endothelium and epithelium at a magnification of 2.2x.

DIAGNOSTIC LENSES

Two mirror contact lens 905 and 905 S

Two mirrored surfaces, which each incline at an angle of 62° towards the front surface, have been cut into the 17 mm long glass cone. This makes it possible to examine the opposite iridocorneal angle without turning the contact lens. The expanse and form of the angle of the iris can be correctly ascertained by using a narrow slit on the slit lamp.



DIAGNOSTIC LENSES

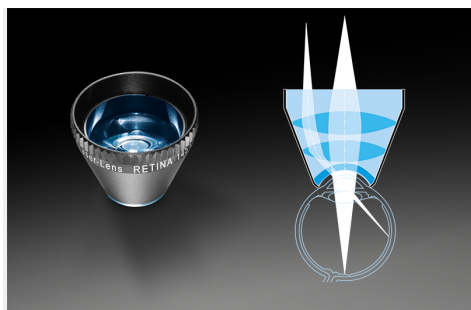
One mirror ora serrata contact lens 904

This contact lens serves to examine the ora serrata, the pars plana and the extreme peripheral parts of the vitreous body and the ocular fundus.

DIAGNOSTIC LENSES

Retina 145 L panfundus wide-angle contact lens

The Retina 145 L contact lens is a panfundus wide-angle contact lens designed to facilitate the diagnosis and treatment of the retina as far as the equator. This contact lens offers an outstanding quality 145° view – yet simultaneously maintains a good depth of vision. The Retina 145 L may be used with all lasers which operate within the 450 nm to 650 nm bandwidths. It can be used with Sterycup - best to prevent the transfer of prions between patients.



DIAGNOSTIC LENSES

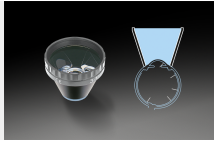
For precise treatment

Haag-Streit contact lenses for laser treatment applications are manufactured from mineral glass and incorporate a special anti reflective surface coating. The quality of the antireflective coating is such that it is highly resistant to decay due to high laser power usage and also cleaning.

LASER LENSES

3-Mirror 903 L

Three mirror contact lens 903 L - Fundus Iridocornea -



LASER LENSES

3-Mirror 906 L

Three mirror contact lens 906 L - Fundus Iridocornea (Infant) -

LASER LENSES

3-Mirror 907 L

Three mirror contact lens 907 L- Fundus Iridocornea (Pediatric) -

LASER LENSES

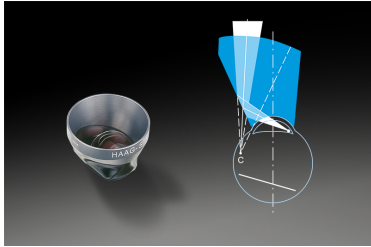
3-Mirror 630 L

Three mirror contact lens 630 L - Fundus Iridocornea -

LASER LENSES

CGIL iridectomy contact lens

Designed by Riquin, Fankhauser et al. to perform full thickness peripheral laser iridectomies.



LASER LENSES

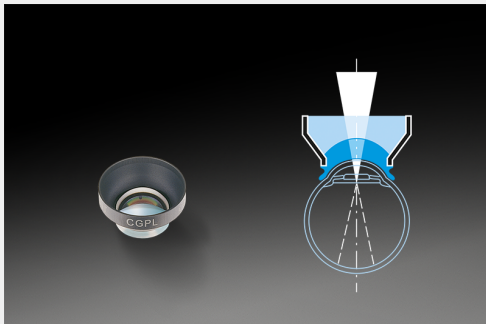
CGAL gonioscopic contact lens

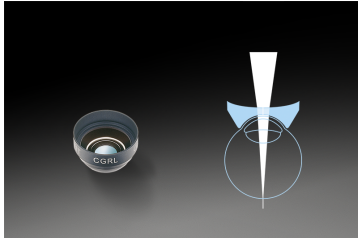
Designed by Roussel and Fankhauser for laser treatments of the chamber angle. It reduces the laser spot by a factor of 1.5 as compared to a Goldmann lens.

LASER LENSES

CGPL capsulotomy contact lens

Designed by Riquin, Fankhauser et al. for the dissection of opacified posterior capsule and membranes in the pupillary and retropupillary space with the YAG laser.





LASER LENSES

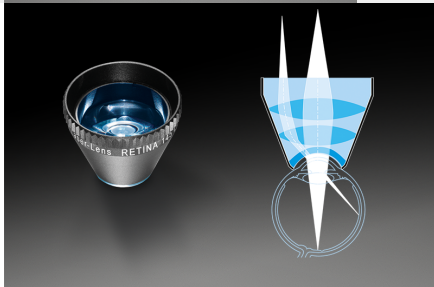
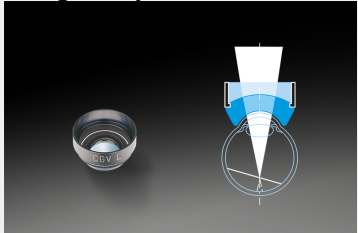
CGRL wide angle contact lens

Designed for laser photocoagulation and diagnosis of the retina.

LASER LENSES

CGVL vitrectomy contact lens

Designed by Rol, Fankhauser et al. for photodisruptive YAG laser procedures in the posterior vitreous



LASER LENSES

Retina 145 L panfundus wide-angle contact lens

The Retina 145 L contact lens is a panfundus wide-angle contact lens designed to facilitate the diagnosis and treatment of the retina as far as the equator. This contact lens offers an outstanding quality 145° view – yet simultaneously maintains a good depth of vision. The Retina 145 L may be used with all lasers which operate within the 450 nm to 650 nm bandwidths. It can be used with Sterycup - best to prevent the transfer of prions between patients.



NON-CONTACT LENS

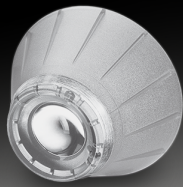
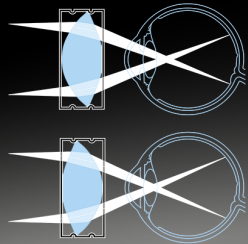
Experience a breathtaking view

The Haag-Streit 81 D lens is a powerful tool for biomicroscopy as well as laser treatment (wavelength of 450 to 650 nm) of the fundus. Thanks to its asymmetric configuration the image reproduction quality of the lens is optimized and additionally the need for pupil dilation is reduced.

NON-CONTACT LENS

81 D lens

Using the lens with the steeply curved surface towards the patient's cornea gives the impression of an image, similar to a 90 D lens – with the steeply curved surface away from the patient's cornea, the impression is similar to the image of a 78 D lens



STERY CUP

Simple and efficient means against bugs

Stery Cup is a disposable shield for use with the HAAG-STREIT 903 and 903 L Goldmann lenses, and with the HAAG-STREIT Retina 145 L contact lens. The optically neutral, sterile and individually wrapped cups are designed for single use and significantly reduce the risk of bacterial transfer.

STERY CUP

Gentle manipulation on the eye

Besides reducing the risk of crossinfection, Stery Cup also reduces the risk of damaging the patients' cornea as the contact lens can be rotated inside the cup. Stery Cup can also increase the life of the contact lenses thanks to a reduction in the number of disinfection processes required.



ACCESSORIES

Simple and safe disinfection of ophthalmic contact lenses

For efficient disinfecting routines we recommend Haag-Streit Desinset. This instrument set is ideal for disinfection of ophthalmic contact lenses and comprises cleaning- and storage container.

Алматы (7273)495-231
Ангарск (3955)60-70-56
Архангельск (8182)63-90-72
Астрахань (8512)99-46-04
Барнаул (3852)73-04-60
Белгород (4722)40-23-64
Благовещенск (4162)22-76-07
Брянск (4832)59-03-52
Владивосток (423)249-28-31
Владикавказ (8672)28-90-48
Владимир (4922)49-43-18
Волгоград (844)278-03-48
Вологда (8172)26-41-59
Воронеж (473)204-51-73
Екатеринбург (343)384-55-89

Иваново (4932)77-34-06
Ижевск (3412)26-03-58
Иркутск (395)279-98-46
Казань (843)206-01-48
Калининград (4012)72-03-81
Калуга (4842)92-23-67
Кемерово (3842)65-04-62
Киров (8332)68-02-04
Коломна (4966)23-41-49
Кострома (4942)77-07-48
Краснодар (861)203-40-90
Красноярск (391)204-63-61
Курск (4712)77-13-04
Курган (3522)50-90-47
Липецк (4742)52-20-81

Магнитогорск (3519)55-03-13
Москва (495)268-04-70
Мурманск (8152)59-64-93
Набережные Челны (8552)20-53-41
Нижний Новгород (831)429-08-12
Новокузнецк (3843)20-46-81
Ноябрьск (3496)41-32-12
Новосибирск (383)227-86-73
Омск (3812)21-46-40
Орел (4862)44-53-42
Оренбург (3532)37-68-04
Пенза (8412)22-31-16
Петрозаводск (8142)55-98-37
Псков (8112)59-10-37
Пермь (342)205-81-47

Ростов-на-Дону (863)308-18-15
Рязань (4912)46-61-64
Самара (846)206-03-16
Санкт-Петербург (812)309-46-40
Саратов (845)249-38-78
Севастополь (8692)22-31-93
Саранск (8342)22-96-24
Симферополь (3652)67-13-56
Смоленск (4812)29-41-54
Сочи (862)225-72-31
Ставрополь (8652)20-65-13
Сургут (3462)77-98-35
Сыктывкар (8212)25-95-17
Тамбов (4752)50-40-97
Тверь (4822)63-31-35

Тольятти (8482)63-91-07
Томск (3822)98-41-53
Тула (4872)33-79-87
Тюмень (3452)66-21-18
Ульяновск (8422)24-23-59
Улан-Удэ (3012)59-97-51
Уфа (347)229-48-12
Хабаровск (4212)92-98-04
Чебоксары (8352)28-53-07
Челябинск (351)202-03-61
Череповец (8202)49-02-64
Чита (3022)38-34-83
Якутск (4112)23-90-97
Ярославль (4852)69-52-93

Россия +7(495)268-04-70

Казахстан +7(7172)727-132

Киргизия +996(312)96-26-47

<https://hs.nt-rt.ru> || hbs@nt-rt.ru