

Алматы (7273)495-231
Ангарск (3955)60-70-56
Архангельск (8182)63-90-72
Астрахань (8512)99-46-04
Барнаул (3852)73-04-60
Белгород (4722)40-23-64
Благовещенск (4162)22-76-07
Брянск (4832)59-03-52
Владивосток (423)249-28-31
Владикавказ (8672)28-90-48
Владимир (4922)49-43-18
Волгоград (844)278-03-48
Вологда (8172)26-41-59
Воронеж (473)204-51-73
Екатеринбург (343)384-55-89

Россия +7(495)268-04-70

Иваново (4932)77-34-06
Ижевск (3412)26-03-58
Иркутск (395)279-98-46
Казань (843)206-01-48
Калининград (4012)72-03-81
Калуга (4842)92-23-67
Кемерово (3842)65-04-62
Киров (8332)68-02-04
Коломна (4966)23-41-49
Кострома (4942)77-07-48
Краснодар (861)203-40-90
Красноярск (391)204-63-61
Курск (4712)77-13-04
Курган (3522)50-90-47
Липецк (4742)52-20-81

Магнитогорск (3519)55-03-13
Москва (495)268-04-70
Мурманск (8152)59-64-93
Набережные Челны (8552)20-53-41
Нижний Новгород (831)429-08-12
Новокузнецк (3843)20-46-81
Ноябрьск (3496)41-32-12
Новосибирск (383)227-86-73
Омск (3812)21-46-40
Орел (4862)44-53-42
Оренбург (3532)37-68-04
Пенза (8412)22-31-16
Петрозаводск (8142)55-98-37
Псков (8112)59-10-37
Пермь (342)205-81-47

Казахстан +7(7172)727-132

Ростов-на-Дону (863)308-18-15
Рязань (4912)46-61-64
Самара (846)206-03-16
Санкт-Петербург (812)309-46-40
Саратов (845)249-38-78
Севастополь (8692)22-31-93
Саранск (8342)22-96-24
Симферополь (3652)67-13-56
Смоленск (4812)29-41-54
Сочи (862)225-72-31
Ставрополь (8652)20-65-13
Сургут (3462)77-98-35
Сыктывкар (8212)25-95-17
Тамбов (4752)50-40-97
Тверь (4822)63-31-35

Киргизия +996(312)96-26-47

Тольятти (8482)63-91-07
Томск (3822)98-41-53
Тула (4872)33-79-87
Тюмень (3452)66-21-18
Ульяновск (8422)24-23-59
Улан-Удэ (3012)59-97-51
Уфа (347)229-48-12
Хабаровск (4212)92-98-04
Чебоксары (8352)28-53-07
Челябинск (351)202-03-61
Череповец (8202)49-02-64
Чита (3022)38-34-83
Якутск (4112)23-90-97
Ярославль (4852)69-52-93

<https://hs.nt-rt.ru> || hbs@nt-rt.ru

HAAG-STREIT SLITLAMP BI900

Simplified operation-high reliability

With this new slit lamp, Haag-Streit combines simplicity and reliability in a modern system which offers integrated digital imaging as an option.



ESSENTIAL FUNCTIONALITY

Microscope

The BI 900 is equipped with a Kepler microscope providing the default magnifications 10 × and 16 ×. With a set of optional eyepieces it can be extended to 25 × and 40 × magnification. The maximised diameter size of the ocular view ensures fatigue-free examination even on long working days.

ESSENTIAL FUNCTIONALITY

Integrated contrast enhancing filter

A yellow barrier filter provides additional contrast for fluorescein applications.





IMAGING SET

Compact imaging solution

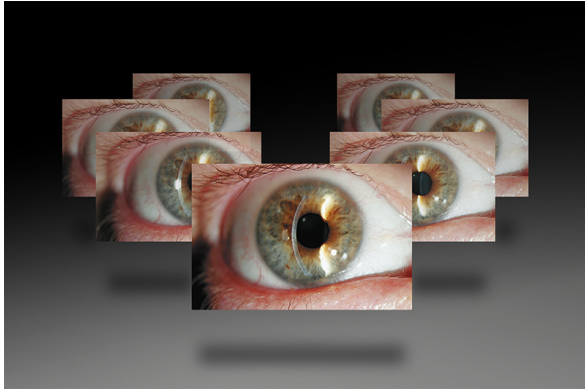
The optional Imaging Set provides a fully integrated compact imaging solution for the BI 900 which has been designed to simplify the image capturing process.

IMAGING SET

Ideal workflow – no distraction

Located in front of the joystick, the control panel can be operated blindly while examining the patient. It provides not only full control over the slit lamp illumination, but also a release bar for the camera, as well as simple and ergonomic management of the camera settings.





SLIT LAMP IMAGING

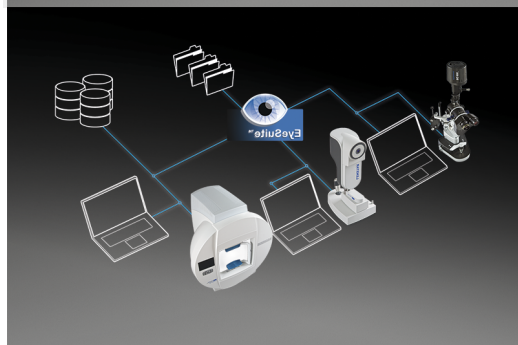
Simple image capturing

Our fast and accurate automatic exposure control ensures correct illumination of the image while you are concentrating on your examination. Thanks to the History Trigger function, you do not need to worry about a patient blinking or moving when you take an image. The History Trigger does not just capture a single image, but records the last few seconds in real time and lets you select the perfect image.

SLIT LAMP IMAGING

Intuitive software

EyeSuite Imaging is a straightforward imaging software supporting the Haag-Streit imaging solutions. Easy image capture, efficient image editing and a well-structured patient management system make the software a perfect team player for daily practice.



SLIT LAMP IMAGING

Flexible interfaces for easy network integration

The EyeSuite software is designed for optimal patient flow in busy practices. Supporting the Haag-Streit imaging solutions, EyeSuite makes the slit lamp fully networkable. Thus, no proprietary third-party software is required to provide connectivity. If the slit lamp is connected to an EyeSuite server, all the images taken can be accessed remotely from any number of viewing stations connected to the same database.



FUNDUS MODULE 300

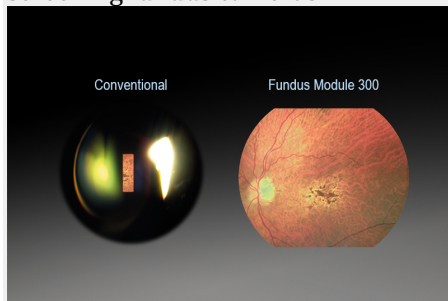
Instant fundus imaging on the slit lamp

This innovative accessory offers all users of current Haag-Streit slit lamps access to instant documentation of the retina. The impressive simplicity of the Fundus Module 300 allows integration of non-mydriatic retina imaging as part of the regular slit lamp examination. This can improve practice workflow and save both clinical and patient time.

FUNDUS MODULE 300

Outstanding results

The image quality of the Fundus Module 300 exceeds by far the conventional possibilities on slit lamps – it even stands up to comparison with full-blown screening fundus cameras!





FUNDUS MODULE 300

Efficient workflow

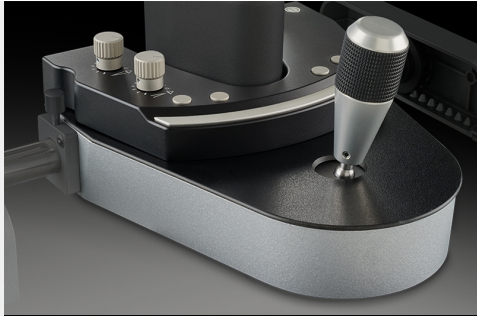
With Fundus Module 300 the basic images required for clinical documentation can be acquired directly and quickly at the slit lamp thus reducing the need for specialist technicians and equipment.

Taking the Fundus Module 300 from the cradle and putting it on the slit lamp takes only a few seconds. On the slit lamp it provides two states: a working position where it captures images of the fundus and a stand-by position where it allows normal use of the slit lamp.

FUNDUS MODULE 300

Simple image capturing

Simply swivel the instrument into working position and align the camera with the slit lamp cross slide. The capture and illumination control are conveniently placed in front of the joystick on the slit lamp control panel. Pressing the release bar triggers the autofocussing of the camera; as soon as accurate focus is reached the image is captured and automatically uploaded into EyeSuite.



FUNDUS MODULE 300

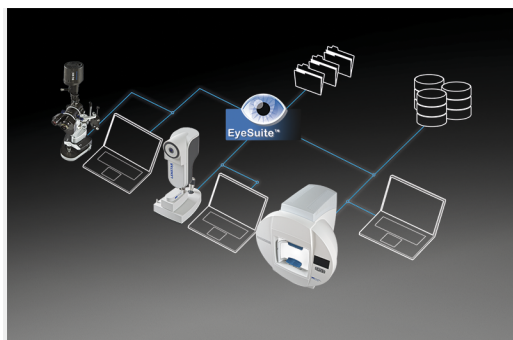
Intuitive software

EyeSuite Imaging is an effective and proven software application that supports a number of Haag-Streit instruments including slit lamp imaging solutions. Images are easily captured and can be edited and displayed in this well structured system that complements daily practice.

FUNDUS MODULE 300

Flexible interfaces for easy network integration

The EyeSuite software is designed for optimal patient flow in busy practices. Supporting the Haag-Streit imaging solutions, EyeSuite makes the slit lamp fully networkable. Thus, no proprietary third-party software is required to provide connectivity. If the slit lamp is connected to an EyeSuite server, all the images taken can be accessed remotely from any number of viewing stations connected to the same database.



HAAG-STREIT AT 900 & AT 900 D

Two instruments - one gold standard

Haag-Streit offers two models of Goldmann applanation tonometers: the AT 900 a purely mechanical instrument and the AT 900 D which introduces advantages from digital technology.

TONOSAFE

Disposable tonometer prisms

Tonosafe™ is a disposable measuring prism for all Goldmann applanation tonometers as well as the Perkins tonometer. Tonosafe™ disposable prisms are a convenient, effective method of reducing the risk of cross infection between patients.



GOLDMANN PRISMS

Excellent optical quality

The reusable Goldmann measuring prisms are distinguished by their optical and mechanical performance which allows for fast and reliable measurements in daily practice. They are largely handmade by experienced workers, and are checked for tight tolerances in weight, optical quality, durability and for consistent measurement results.



ACCESSORIES

Improved efficiency - optimal examination

As supplier of complete solutions, Haag-Streit offers a wide range of accessories of great benefit to the ambitious slit lamp user.

BI 900 ACCESSORIES

Tables and units

Haag-Streit offers a wide range of instrument tables that fit most ophthalmic products, from slit lamps to bowl perimeters. The HSM 901 and HSM 600 series tables fit complex diagnostic systems, featuring cable guides and other handy design detail.





BI 900 ACCESSORIES

25 x Magnification eyepieces

The standard eyepieces provide the BI 900 with magnifications of 10 x and 16 x. For higher magnification Haag-Streit offers optional 25 x magnification eyepieces which provides an overall magnification of the microscope of 25 x and 40 x.

BI 900 ACCESSORIES

Eyepiece with crosshair reticule

The use of this eyepiece ensures perfect focus of the microscope image onto the camera by compensating for user accommodation.





BI 900 ACCESSORIES

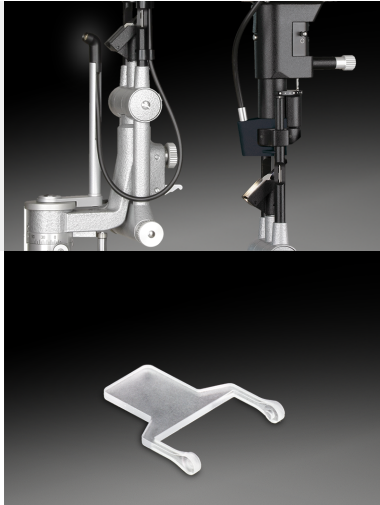
Eyepiece for length estimation

The eyepieces for length estimation provide a reticle in the optics which gives a reference for linear distances. The eyepiece comes with 12.5 x magnification and fits directly into the BQ / BP 900.

BI 900 ACCESSORIES

LED-Background illumination

A bright and even background illumination is an important factor for all imaging applications on the slit lamp. All LED illumination heads for BQ 900, BP 900 and BI 900 are pre-configured so that only the fiber optic need to be connected. Haag-Streit offers two solutions: A pivoting background illumination which has the advantage that it can be set independently from the slit illumination and a fixed version which has the advantage that it does not restrict the operation area between slit lamp and patient.



BI 900 ACCESSORIES

Diffusor

This accessory diffuses the light to provide an improved general overview of the eye when the slit lamp is used at low magnification. Especially for imaging this accessory is indispensable.

BI 900 ACCESSORIES

Short illumination mirror

When working with small illumination angles (e.g. for fundus examination) the standard mirror obscures one of the optical pathes partially or completely. The short mirror allows unobstructed view but requires that the illumination is tilted by 10° in order to have the complete light patch on the mirror.



BI 900 ACCESSORIES

Accessory mounting base

This accessory mounting base is a standard interface for attachments to the slit lamp such as laser adapters or applanation tonometer.

BI 900 ACCESSORIES

Headrest

The headrest has been designed according to anatomical criteria and includes an adjustable chinrest. The unique fixation device permits uninterrupted observation and simultaneous guidance of the patient's eye which helps to make examination more comfortable for operator and patient. The headrest is available with and without fixation device.



© HAAG-STREIT Far East 沪ICP备19019968号-1

Алматы (7273)495-231
Ангарск (3955)60-70-56
Архангельск (8182)63-90-72
Астрахань (8512)99-46-04
Барнаул (3852)73-04-60
Белгород (4722)40-23-64
Благовещенск (4162)22-76-07
Брянск (4832)59-03-52
Владивосток (423)249-28-31
Владикавказ (8672)28-90-48
Владимир (4922)49-43-18
Волгоград (844)278-03-48
Вологда (8172)26-41-59
Воронеж (473)204-51-73
Екатеринбург (343)384-55-89

Иваново (4932)77-34-06
Ижевск (3412)26-03-58
Иркутск (395)279-98-46
Казань (843)206-01-48
Калининград (4012)72-03-81
Калуга (4842)92-23-67
Кемерово (3842)65-04-62
Киров (8332)68-02-04
Коломна (4966)23-41-49
Кострома (4942)77-07-48
Краснодар (861)203-40-90
Красноярск (391)204-63-61
Курск (4712)77-13-04
Курган (3522)50-90-47
Липецк (4742)52-20-81

Россия +7(495)268-04-70

Магнитогорск (3519)55-03-13
Москва (495)268-04-70
Мурманск (8152)59-64-93
Набережные Челны (8552)20-53-41
Нижний Новгород (831)429-08-12
Новокузнецк (3843)20-46-81
Ноябрьск (3496)41-32-12
Новосибирск (383)227-86-73
Омск (3812)21-46-40
Орел (4862)44-53-42
Оренбург (3532)37-68-04
Пенза (8412)22-31-16
Петрозаводск (8142)55-98-37
Псков (8112)59-10-37
Пермь (342)205-81-47

Казахстан +7(7172)727-132

Ростов-на-Дону (863)308-18-15
Рязань (4912)46-61-64
Самара (846)206-03-16
Санкт-Петербург (812)309-46-40
Саратов (845)249-38-78
Севастополь (8692)22-31-93
Саранск (8342)22-96-24
Симферополь (3652)67-13-56
Смоленск (4812)29-41-54
Сочи (862)225-72-31
Ставрополь (8652)20-65-13
Сургут (3462)77-98-35
Сыктывкар (8212)25-95-17
Тамбов (4752)50-40-97
Тверь (4822)63-31-35

Киргизия +996(312)96-26-47

Тольятти (8482)63-91-07
Томск (3822)98-41-53
Тула (4872)33-79-87
Тюмень (3452)66-21-18
Ульяновск (8422)24-23-59
Улан-Удэ (3012)59-97-51
Уфа (347)229-48-12
Хабаровск (4212)92-98-04
Чебоксары (8352)28-53-07
Челябинск (351)202-03-61
Череповец (8202)49-02-64
Чита (3022)38-34-83
Якутск (4112)23-90-97
Ярославль (4852)69-52-93

<https://hs.nt-rt.ru> || hbs@nt-rt.ru